



75 Breakspeare Road

Abbots Langley, WD5 0ER

Price Guide £400,000

In the ever popular Breakspeare Road is this charming 2 bed period character terraced home which is available with no upper chain.

As you step inside, you're greeted by two generous reception rooms—perfect for relaxing or entertaining guests. The house has a cosy period cottage feel and has been tastefully cared for over many years. It has 2 reception rooms, 2 double bedrooms with modern bathroom and kitchen.

One of the home's many standout features is the expansive landscaped garden. This is complete with a substantial wooden covered outside dining area and rear garden cabin room & gym. These outdoor retreat spaces are an excellent addition to the main house and come as a very nice surprise to visitors.

Just moments from the village centre, the home enjoys easy access to local shops, amenities, and transport links, all while being close to the scenic Hertfordshire countryside. The location offers both community charm and natural beauty.

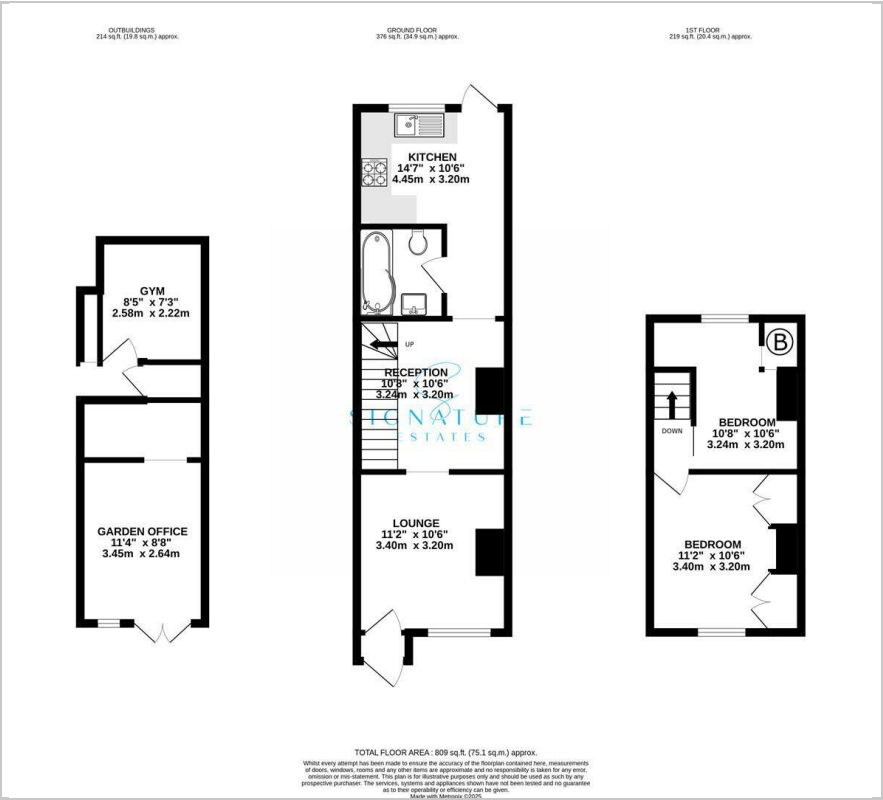
Viewing

Please contact our Abbots Langley Office on 01923262666 if you wish to arrange a viewing appointment for this property or require further information.

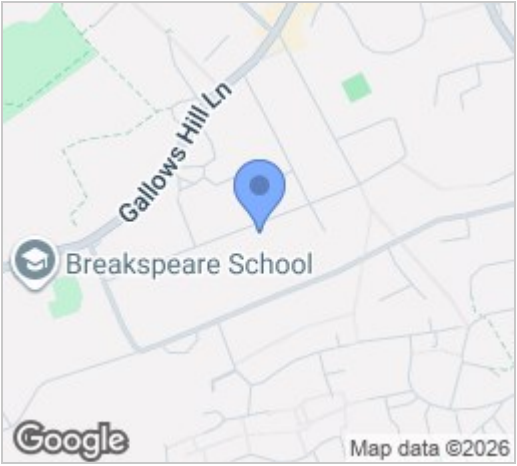
- ***NO UPPER CHAIN***
- 1 Min Walk to Village
- 2 Reception Rooms
- Period Cottage Feel
- 2 Double Bedrooms
- Modern Kitchen/ Bathroom
- Wonderful Landscaped Garden
- Tastefully Crafted Outdoor Areas
- Large Garden Cabin & Separate Gym
- 15 Min Walk to Station



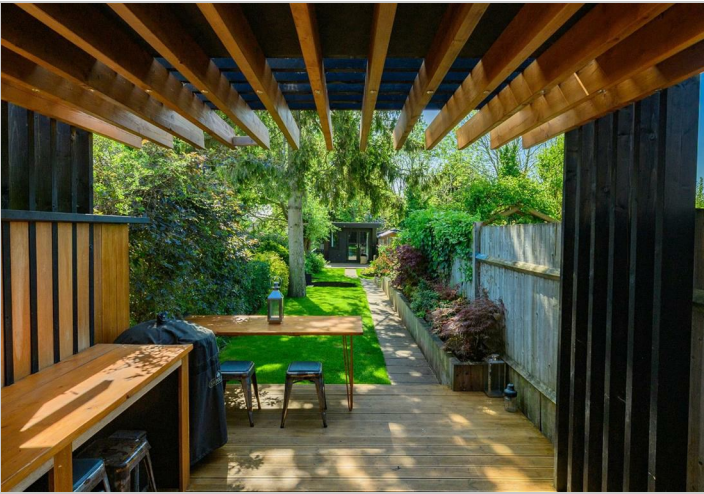
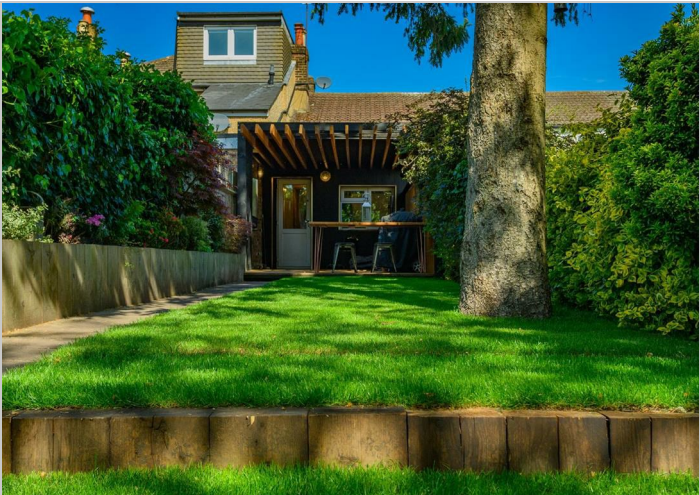
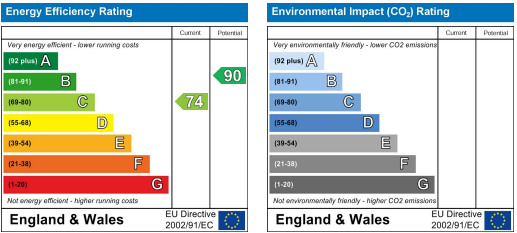
Floor Plan



Area Map



Energy Efficiency Graph



These particulars, whilst believed to be accurate are set out as a general outline only for guidance and do not constitute any part of an offer or contract. Intending purchasers should not rely on them as statements of representation of fact, but must satisfy themselves by inspection or otherwise as to their accuracy. No person in this firms employment has the authority to make or give any representation or warranty in respect of the property.